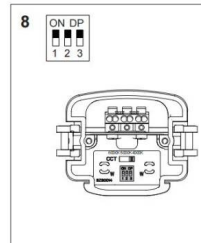
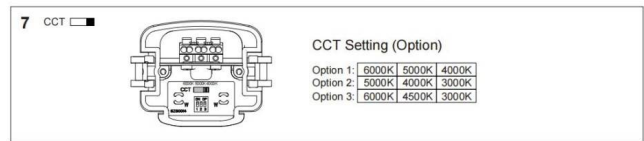
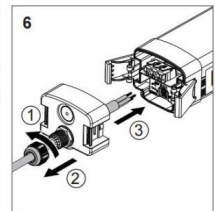
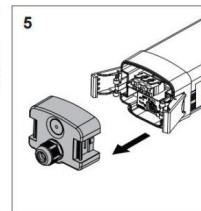
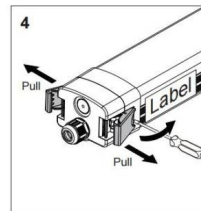
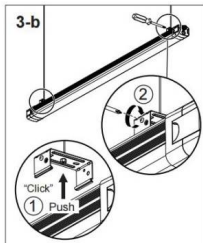
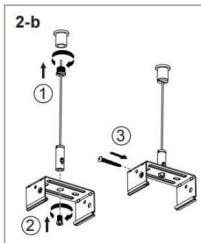
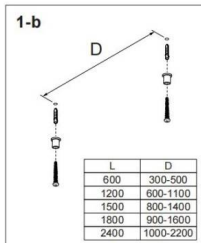
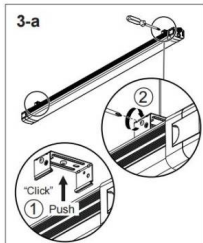
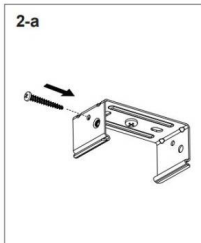
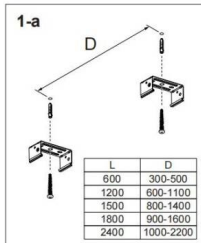
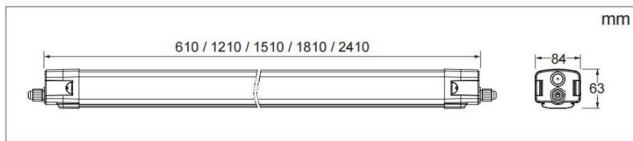
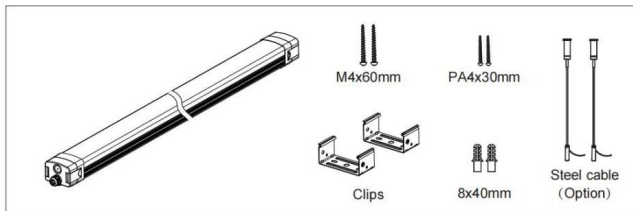




- Installation and wiring of luminaire must be in accordance with all applicable local codes.
- Installation, inspection, and maintenance of luminaires should be performed by a qualified electrician.
- DO NOT make or alter any open holes in the luminaire. Do not modify the luminaire.
- DO NOT install damaged product.
- Make sure electrical power is OFF before and during installation and maintenance.
- Make sure the equipment is properly grounded.
- Make sure the supply voltage is same as the rated fixture voltage.



Wattage setting ( Option )			
1.2M...			
1	2	3	Power(W)
—	—	—	50
ON	—	—	42
—	ON	—	36
—	—	ON	28
1.5M...			
1	2	3	Power(W)
—	—	—	60
ON	—	—	50
—	ON	—	42
—	—	ON	32
1.2M...			
1	2	3	Power(W)
—	—	—	45
ON	—	—	38
—	ON	—	32
—	—	ON	26
1.5M...			
1	2	3	Power(W)
—	—	—	45
ON	—	—	38
—	ON	—	32
—	—	ON	26

